



Alamance County Beekeepers

Newsletter for September 2017

Monthly Meeting

September 21st @ 6:00 p.m.

Honey Tasting & Cookout
Paul Jollay's Apiary

It's time for our annual cookout and honey tasting! Fill up a squeeze bear with a sample of this year's honey from your bee yard, and be part of the competition!



The club will provide the hotdogs, buns, plates, cups, utensils, and ice. Bring sides and fixins of your choice to share.



You'll want to bring a chair, too!

2435 Glencoe Street
Burlington, NC 26217
336-213-0912
pmj664@gmail.com

Plant Sales

If you've been thinking about upping your plant game for pollinators, this is a good time of year to plan and execute. There are two notable local plant sales this September:

[7th Annual Master Gardener Fall Plant Sale](#)

Wednesday, September 20, 9 a.m. - 6 p.m.
Alamance County Agriculture Building



Extension Master Gardener Volunteers have been nurturing herbaceous perennials over the recent months (or year, even), making sure they are in tip-top shape for the plant sale. You are sure to find something for your own pollinator patch at this annual event. Proceeds benefit the Arbor Gate Teaching Garden.

[North Carolina Botanical Garden](#) [Fall Plant Sale and Festival](#)

Friday and Saturday, September 29 & 30
100 Old Mason Farm Rd., Chapel Hill 27517



Members' Night - Friday, September 29, 4-8 p.m.
Members enjoy a special plant sale preview party with 10% discount on plant purchases, live music and refreshments. Become a member at the door!

Public Sale - Saturday, September 30, 9 a.m.-3 p.m.
Choose from a wide variety of southeastern native wildflowers, shrubs, trees, vines, and ferns at our annual sale, in addition to used books and native wildflower seeds.

Bees in the News

Click on the title to read the article.

[They Are What They Eat: Honeybee diet determines destiny](#), Beth Baker, 8/31/2017, PLOS Research News. "Royal jelly was previously thought to be the key food that influences caste development. But this new research identifies a previously unknown function of bee bread plant microRNAs in bee development; a fascinating example of how molecules can act not just across species but across kingdoms."

[This hallucinogenic honey is so prized that hunters scale cliffs and confront swarms of bees to get it](#), Kevin Loria, 8/27/2017, Business Insider. Giant honey bees in the Himalayas of Nepal produce a "mad" honey because of toxins they acquire from spring flowers. The honey, which is also used as an antiseptic, cough medicine, and pain reliever, fetches a high monetary reward for the climbers who will harvest it. But traditional honey hunts may not be around for much longer. Documentary film, "The Last Honey Hunter" will be released in 2018.

[Clemson, UNCG researchers test honey bee response to eclipse totality](#), T. DeLene Beeland, 9/13/2017, The (Clemson) Newsstand. Two experiments in the Clemson University apiary during the recent total eclipse showed marked decrease in honey bee activity outside the hive during the darkness.

[Honeybees Could Play a Role in Developing New Antibiotics](#), Sam Hostettler, 9/8/2017, University of Illinois College of Pharmacy. "In a new study published in the journal Nature Structural & Molecular Biology, UIC researchers ... explain how a derivative of the antibiotic apidaecin — Api137 — can block the production of proteins in potentially harmful bacteria ... Api137 is a natural product produced by bees, wasps or hornets."

More Plants: Fruit and Nut Trees

Alamance County 4-H is holding its annual fall plant sale fundraiser now through October 23.



On offer this year:

- Apple trees - \$20
- Blackberry Plants - \$8
- Fig Trees - \$8
- Muscadine Vines - \$8
- Peach Trees - \$30
- Pear Trees - \$30
- Pecan Trees - \$45

Order form can be found on the NC Extension Service [website](#), or you can call 336-570-6740 for more information.



Notes from the August Meeting

There was a good turnout at August's ice cream social event at Breezy Acres. Thank you, Don and Shirley Moore, for hosting this annual get-together and learning event.



And thanks to Nancy Ruppert and Don Hopkins, who showed us what's what in the bee yard this time of year.

Bee Culture Magazine and more

Residents of the state of NC have access to thousands of subscription materials -- books, videos, magazines -- through their libraries.

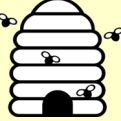
To find these treasures, go to NCLive.org and choose your library, i.e., Alamance County Public Libraries, and start searching. If you want to read *Bee Culture* every month, you can do it at NCLive. If you want to read beekeeping books online, you can find excellent titles at NCLive.

Call your local library for more information about this terrific resource.



September in the Apiary

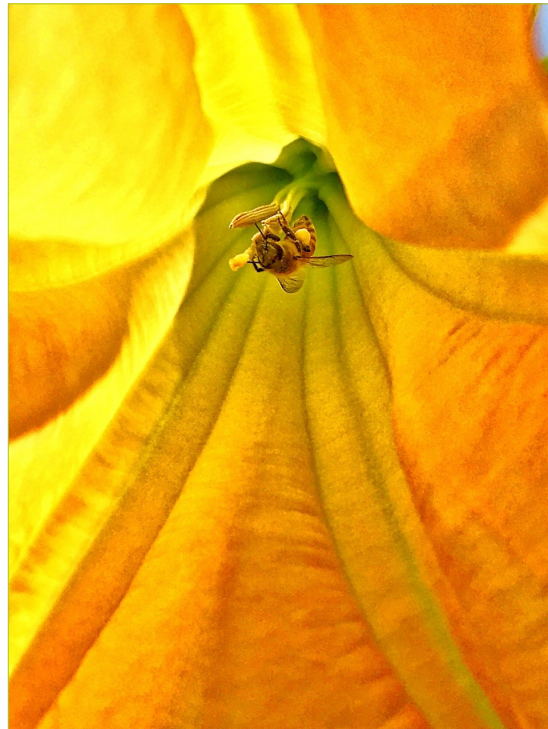
Notes from ACB Class Text & Nancy Ruppert

- ◇ If you didn't check on your queen status last month, it's not too late to make sure each hive is queen right. 
- ◇ Do you see brood in bottom boxes?
- ◇ That sour odor coming from your hives is probably from Aster nectar. Asters are in bloom now and will continue through the season. Enjoy the autumn honey fragrance!
- ◇ Varroa control should be completed by the end of September.
- ◇ Consider Nosema assessment/treatment.
- ◇ May feed 1:1 sugar syrup to stimulate queen laying to build up winter population.



Clematis terniflora, or Sweet Autumn Virginbower. Photo courtesy of Geoff Leister.

What will a bee get from visiting too many flowers?
High bud-pressure.



Honey bee visiting *Brugmansia* 'Charles Grimaldi' (gold angels' trumpets) in early morning. Photo by Amy Leister.



Tip-toeing through the Verbena with Tank

"The flowers are visited primarily by long-tongued bees, especially bumblebees. Some short-tongued bees, butterflies, and skippers also visit the flowers; the long tubes of the disk florets make the nectar inaccessible to many insects with shorter tongues, such as flies and wasps ..."

An Opportunity to Volunteer at the North Carolina State Fair

There are still a few shifts available as of 9/14/2017

The bee information booth at the N.C. State Fair is a chance to answer bee questions and interact with fair goers. The shifts are for 4 hours. The date range is October 12-22. Gate tickets for the Fair will be provided for volunteers. This qualifies for service or volunteer hours for your club or a master beekeeper program.



Sign up via the web interface at Signup Genius: www.SignUpGenius.com/go/30E0C4BAEAF2DA3F85-2017

Calendar

4-H Plant Sale

September 12 - October 23

Beekeeping the Foxfire Way,

September 16, 11:00 a.m. to 4:00 p.m.

Farm to Table

September 19-20

Cedarrock Park

Extension Master Gardener Plant Sale

September 20, 9:00 a.m. to 6:00 p.m.

NC Botanical Garden Plant Sale

September 29-30

Beekeeping Presentation by Ira

Grove Park Baptist Church

October 2, 6:30 p.m.

Fall Festival, October 7

Cedarrock Park, 1:00 - 6:00 p.m.

North Carolina State Fair

October 12-24

If you are out and about sharing your beekeeping love and know-how with others, please tell, so we can share the good news!



Officers for 2017

President : Ira Poston

Vice-President : Mike Ross

Recording Secretary : Sheyenne Michelizzi

Treasurer : Zivon Price

Program Chair : Caitlin Vatikiotis-Bateson

One-year Director : Wayne Foulks

Two-year Director : Randy Stinson

Three-year Director : Paul Jollay

Appointments

Webmaster : Geoff Leister

Newsletter : Cynthia Pierce